

Cylindrical bars

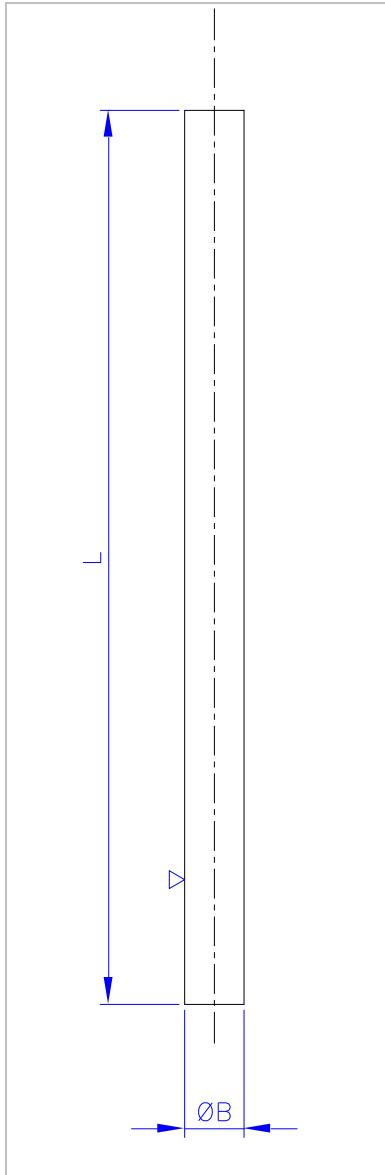
Argensinter standard



Cylindrical bars without center – gross -

(according to Argensinter standard)

Type: BCM BOL

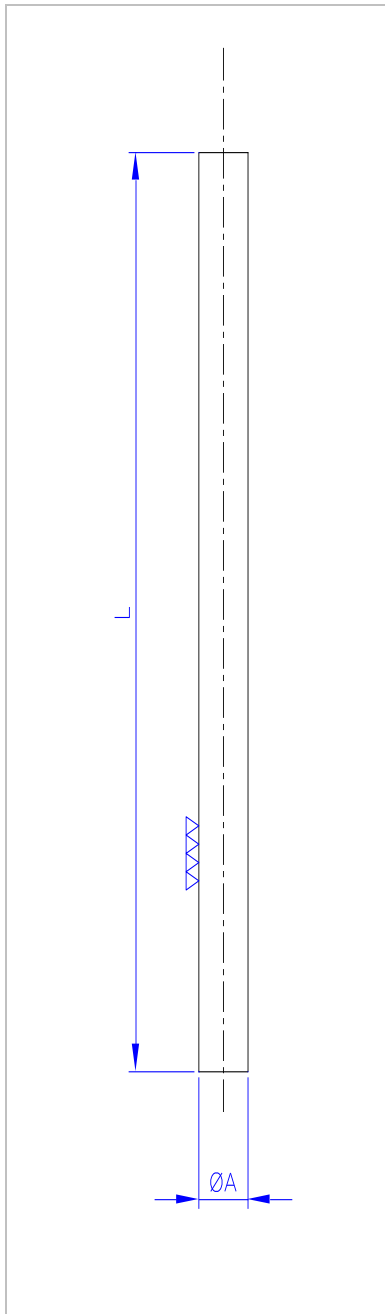


Code	ØB	Tole	L	Tole
BCM BOL 0255	2.00	+0.3 +0.5	55	+1 +2
BCM BOL 0355	3.00	+0.3 +0.5	55	+1 +2
BCM BOL 0455	4.00	+0.3 +0.5	55	+1 +2
BCM BOL 0555	5.00	+0.3 +0.6	55	+1 +2
BCM BOL 0655	6.00	+0.3 +0.6	55	+1 +2
BCM BOL 0755	7.00	+0.3 +0.6	55	+1 +2
BCM BOL 08100	8.00	+0.4 +0.7	100.	+1 +5
BCM BOL 09100	9.00	+0.4 +0.7	100	+1 +5
BCM BOL 10100	10.00	+0.4 +0.7	100	+1 +5
BCM BOL 11100	11.00	+0.5 +0.8	100	+1 +5
BCM BOL 12100	12.00	+0.5 +0.8	100	+1 +5
BCM BOL 13100	13.00	+0.5 +0.8	100	+1 +5
BCM BOL 14100	14.00	+0.5 +0.8	100	+1 +5
BCM BOL 15100	15.00	+0.5 +0.8	100	+1 +5
BCM BOL 16100	16.00	+0.5 +0.8	100	+1 +5
BCM BOL 08150	8.00	+0.4 +0.7	150	+1 +5
BCM BOL 09150	9.00	+0.4 +0.7	150	+1 +5
BCM BOL 10150	10.00	+0.4 +0.7	150	+1 +5
BCM BOL 11150	11.00	+0.5 +0.8	150	+1 +5
BCM BOL 12150	12.00	+0.5 +0.8	150	+1 +5
BCM BOL 13150	13.00	+0.5 +0.8	150	+1 +5
BCM BOL 14150	14.00	+0.5 +0.8	150	+1 +5
BCM BOL 15150	15.00	+0.5 +0.8	150	+1 +5
BCM BOL 16150	16.00	+0.5 +0.8	150	+1 +5

Cylindrical bars without center –ground-

(according to Argensinter standard)

Type: BCM ROL

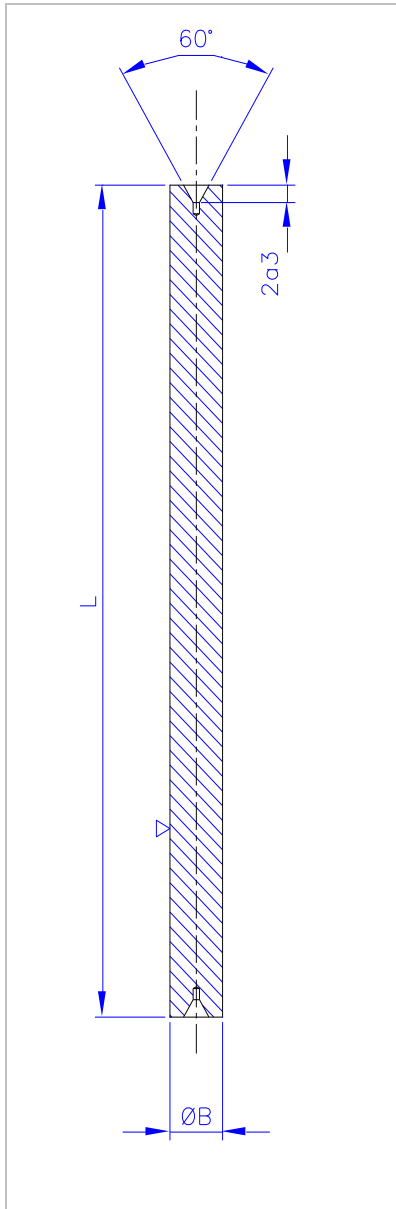


Code	ØA	Tole	L	Tole
BCM ROL 0255	2.00	h7	55	+1 +2
BCM ROL 0355	3.00	h7	55	+1 +2
BCM ROL 0455	4.00	h7	55	+1 +2
BCM ROL 0555	5.00	h7	55	+1 +2
BCM ROL 0655	6.00	h7	55	+1 +2
BCM ROL 0755	7.00	h7	55	+1 +2
BCM ROL 08100	8.00	h7	100.	+1 +5
BCM ROL 09100	9.00	h7	100	+1 +5
BCM ROL 10100	10.00	h7	100	+1 +5
BCM ROL 11100	11.00	h7	100	+1 +5
BCM ROL 12100	12.00	h7	100	+1 +5
BCM ROL 13100	13.00	h7	100	+1 +5
BCM ROL 14100	14.00	h7	100	+1 +5
BCM ROL 15100	15.00	h7	100	+1 +5
BCM ROL 16100	16.00	h7	100	+1 +5
BCM ROL 08150	8.00	h7	150.	+1 +5
BCM ROL 09150	9.00	h7	150	+1 +5
BCM ROL 10150	10.00	h7	150	+1 +5
BCM ROL 11150	11.00	h7	150	+1 +5
BCM ROL 12150	12.00	h7	150	+1 +5
BCM ROL 13150	13.00	h7	150	+1 +5
BCM ROL 14150	14.00	h7	150	+1 +5
BCM ROL 15150	15.00	h7	150	+1 +5
BCM ROL 16150	16.00	h7	150	+1 +5

Cylindrical bars with Female centers - gross -

(according to Argensinter standard)

Type: BCM BCH

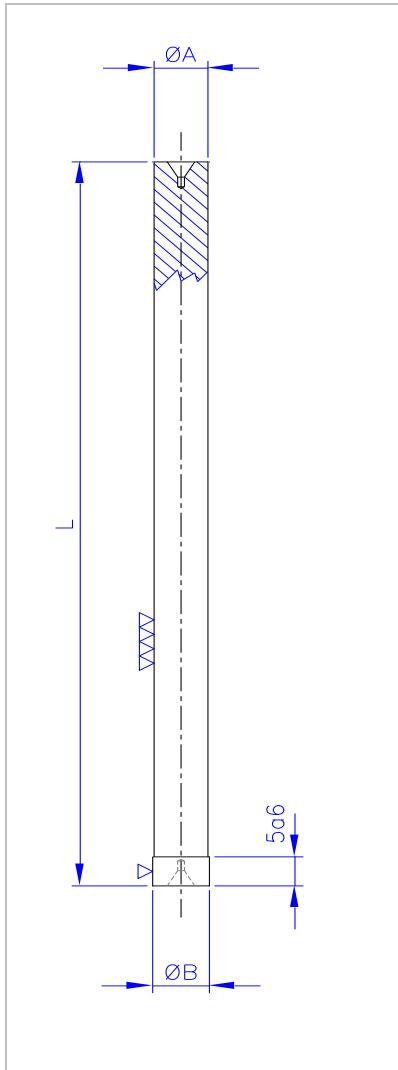


Code	ØB	Tole	L	Tole
BCM BCH 0655	6.00	+0.3 +0.6	55	+1 +2
BCM BCH 0755	7.00	+0.3 +0.6	55	+1 +2
BCM BCH 08100	8.00	+0.4 +0.7	100.	+1 +5
BCM BCH 09100	9.00	+0.4 +0.7	100	+1 +5
BCM BCH 10100	10.00	+0.4 +0.7	100	+1 +5
BCM BCH 11100	11.00	+0.5 +0.8	100	+1 +5
BCM BCH 12100	12.00	+0.5 +0.8	100	+1 +5
BCM BCH 13100	13.00	+0.5 +0.8	100	+1 +5
BCM BCH 14100	14.00	+0.5 +0.8	100	+1 +5
BCM BCH 15100	15.00	+0.5 +0.8	100	+1 +5
BCM BCH 16100	16.00	+0.5 +0.8	100	+1 +5
BCM BCH 08150	8.00	+0.4 +0.7	150.	+1 +5
BCM BCH 09150	9.00	+0.4 +0.7	150	+1 +5
BCM BCH 10150	10.00	+0.4 +0.7	150	+1 +5
BCM BCH 11150	11.00	+0.5 +0.8	150	+1 +5
BCM BCH 12150	12.00	+0.5 +0.8	150	+1 +5
BCM BCH 13150	13.00	+0.5 +0.8	150	+1 +5
BCM BCH 14150	14.00	+0.5 +0.8	150	+1 +5
BCM BCH 15150	15.00	+0.5 +0.8	150	+1 +5
BCM BCH 16150	16.00	+0.5 +0.8	150	+1 +5

Carbide Cylindrical bars with Female centers - ground -

(according to Argensinter standard)

Type: BCM RCH



Code	ØB	Tole	L	Tole
BCM RCH 0655	6.00	h7	55	+1 +2
BCM RCH 0755	7.00	h7	55	+1 +2
BCM RCH 08100	8.00	h7	100.	+1 +5
BCM RCH 09100	9.00	h7	100	+1 +5
BCM RCH 10100	10.00	h7	100	+1 +5
BCM RCH 11100	11.00	h7	100	+1 +5
BCM RCH 12100	12.00	h7	100	+1 +5
BCM RCH 13100	13.00	h7	100	+1 +5
BCM RCH 14100	14.00	h7	100	+1 +5
BCM RCH 15100	15.00	h7	100	+1 +5
BCM RCH 16100	16.00	h7	100	+1 +5
BCM RCH 08150	8.00	h7	150.	+1 +5
BCM RCH 09150	9.00	h7	150	+1 +5
BCM RCH 10150	10.00	h7	150	+1 +5
BCM RCH 11150	11.00	h7	150	+1 +5
BCM RCH 12150	12.00	h7	150	+1 +5
BCM RCH 13150	13.00	h7	150	+1 +5
BCM RCH 14150	14.00	h7	150	+1 +5
BCM RCH 15150	15.00	h7	150	+1 +5
BCM RCH 16150	16.00	h7	150	+1 +5

New!



Save time and get the best service. Visit [MiArgensinter!](http://mi.argensinter.com.ar) (<http://mi.argensinter.com.ar>) and enter our online commercial platform. Consult our prices and the stock of these and/or any of our other products. You will also be able to buy and order the manufacturing of more items without moving from your desk in a fast and safe way.

If you are in Argentina, you will receive your order in 24 hours (depending of your location, the period may be longer).

For further information, please do not hesitate to contact us or visit our web site at www.argensinter.com

Argensinter S.R.L. – Hard Metal and Special Cutting Tools
Tacuarí 925 (B1704FJM) Ramos Mejía
Province of Buenos Aires, Argentina
Phone: (+54) 11 4658 7637 – Fax: (+54) 11 4656 8028
email: sales@argensinter.com - Web site: <http://www.argensinter.com>