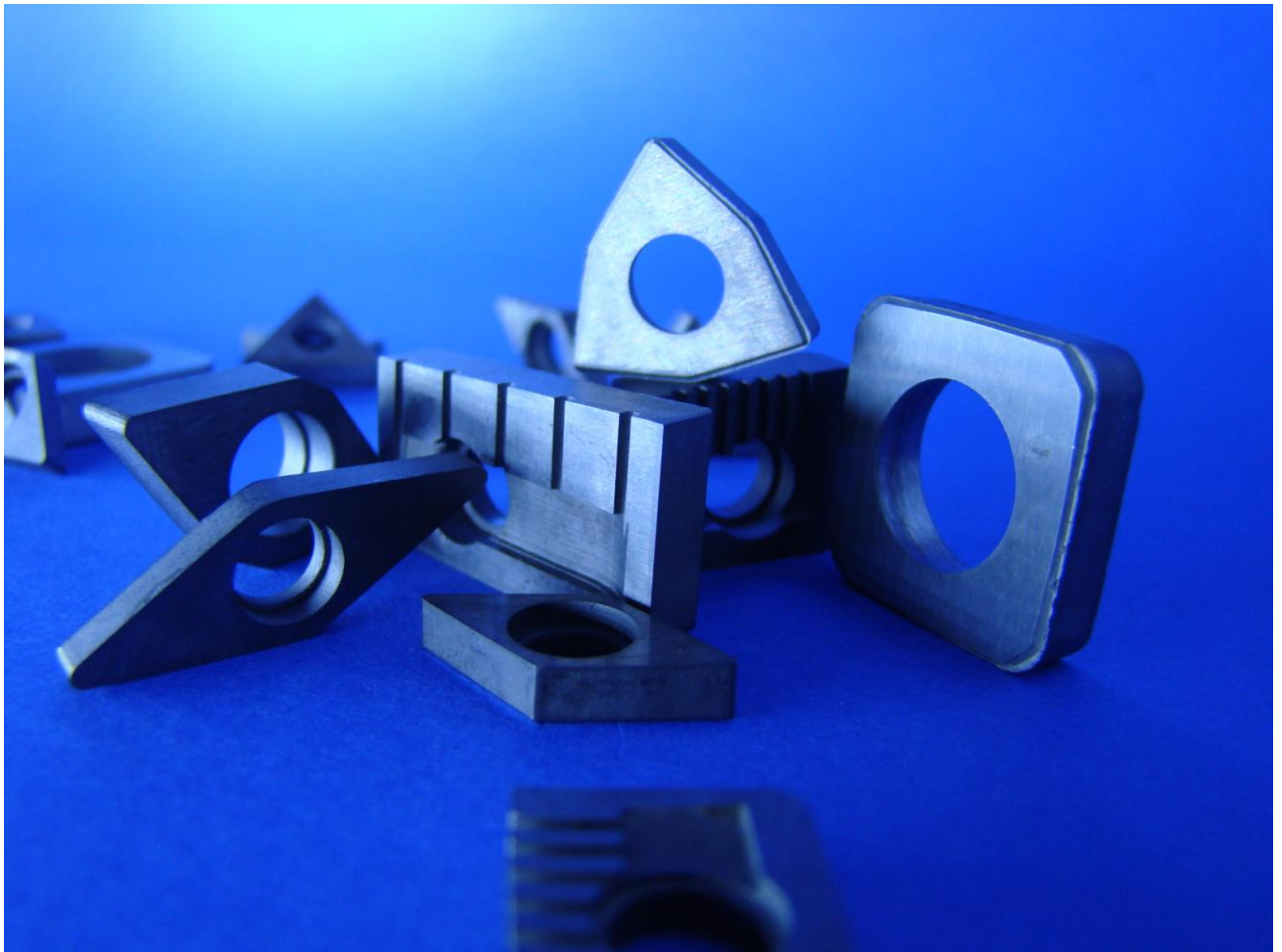


# Placas de Apoio

Argensinter standard



## Placas de Apoyo

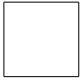
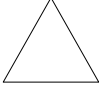
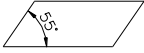
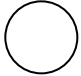
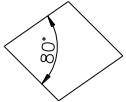

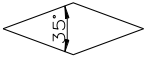
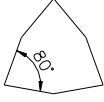
(de acuerdo a standard Argensinter)

Códigos ISO - Plaquetas Intercambiables

Estructura de la codificación:

<b>A</b>	<b>S</b>	<b>12</b>	<b>M</b>
1	2	3	4

- 1 Código único de Identificación de la familia de las placas de apoyo: "A"  
 2 Forma o Geometría de la Plaqueta

			
<b>S</b>	<b>T</b>	<b>K</b>	<b>R</b>
			
<b>C</b>	<b>D</b>	<b>V</b>	<b>W</b>

- 3 Círculo Inscrito en Milímetros del inserto intercambiable  
 4 Sistema de Fijación

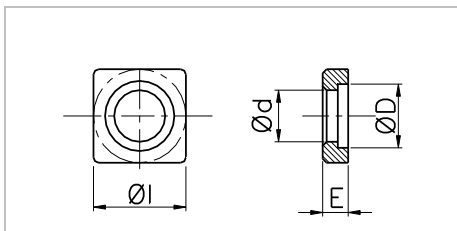
M = Palanca  
 PN = Perno Central y Brida  
 E = Espina Partida  
 K = Tornillo

ARGENSINTER

## Placas de Apoio

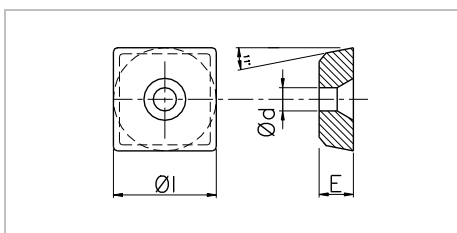
(de acordo a standard Argensinter)

### Tipo S



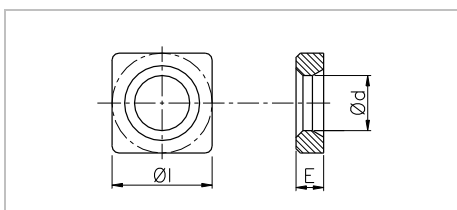
Código	Inserto	ØI	E	Ød	ØD
APO AS 12 PN	SNMG 12	12.50	4.76	5.00	6.90
APO AS 12 PNG	SNMG 12	12.50	3.18	6.60	8.20
APO AS 12 K	SNMG 12	12.50	4.76	7.50	8.20
APO AS 19 K	SNMG 19	18.70	4.76	11.30	12.3
APO AS 19 PN	SNMG 19	18.70	4.76	11.30	13.0

Sistema de Fijación: Perno Central y Brida / Tornillo



Código	Inserto	ØI	E	Ød
APO AS 12 EP	SPUN 12	11.3	3.18	3.40
APO AS 19 EP	SPUN 19	18.0	4.76	3.40

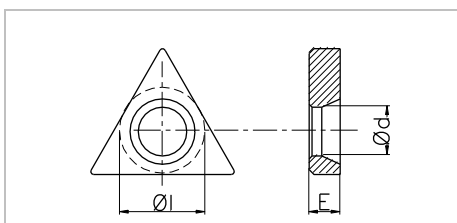
Sistema de Fijación: Espina Partida



Código	Inserto	ØI	E	Ød
APO AS 12 M	SNMG 12	11.6	3.18	6.40
APO AS 15 M	SNMG 15	14.6	4.76	8.20
APO AS 19 M	SNMG 19	18.0	4.76	9.70
APO AS 25 M	SNMG 25	24.10	6.35	12.9

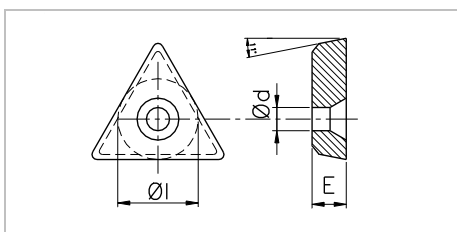
Sistema de Fijación: Palanca

### Tipo T



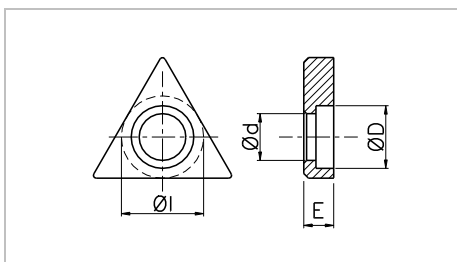
Código	Inserto	ØI	E	Ød
APO AT 16 M	TNMG 16	8.8	3.18	4.90
APO AT 22 M	TNMG 22	11.8	3.18	6.40
APO AT 27 M	TNMG 27	14.60	4.76	8.20
APO AT 33 M	TNMG 33	17.80	4.76	9.80

Sistema de Fijación: Palanca



Código	Inserto	ØI	E	Ød
APO AT 16 EP	TPUN 16	8.00	3.18	2.40
APO AT 22 EP	TPUN 22	11.00	3.18	3.40
APO AT 27 EP	TPUN 27	13.30	4.76	3.40

Sistema de Fijación: Espina Partida



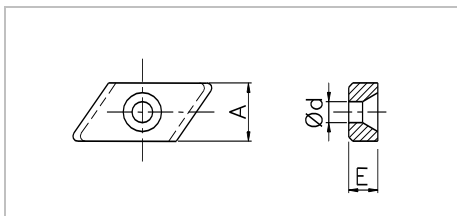
Código	Inserto	ØI	E	Ød	ØD
APO AT 16 PN	TNMG 16	8.80	3.18	5.10	6.10
APO AT 16 K	TNMG 16	8.80	4.76	6.20	6.00
APO AT 22 PN	TNMG 22	11.70	4.76	5.10	6.50
APO AT 22 PNG	TNMG 22	11.70	4.76	6.20	7.50
APO AT 22 K	TNMG 22	11.70	4.76	7.20	8.00

Sistema de Fijación: Perno Central y Brida / Tornillo

## Placas de Apoio

(de acordo a standard Argensinter)

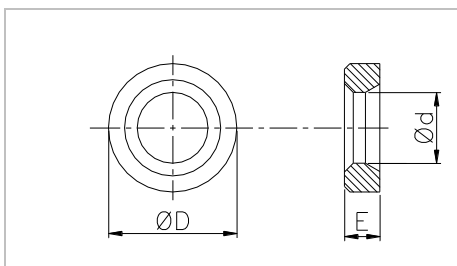
### Tipo K



Código	Inserto	Øl	E	Ød
APO AK 16 ER	KNUX 16 (R)	9.40	4.76	3.40
APO AK 16 EL	KNUX 16 (L)	9.40	4.76	3.40

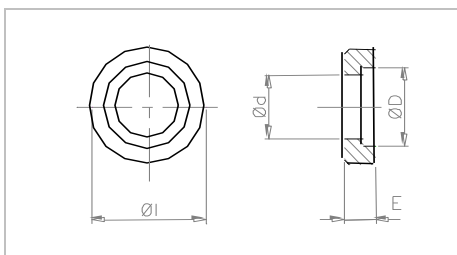
Sistema de Fijación: Espina Partida

### Tipo R



Código	Inserto	ØD	E	Ød
APO AR 20 M	RCMT 20	17.50	4.76	8.20
APO AR 25 M	RCMT 25	22.00	6.35	9.80

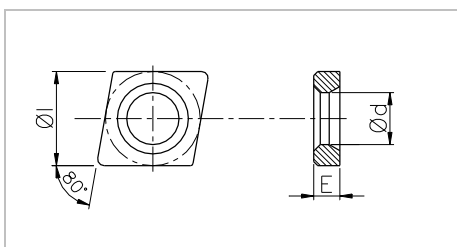
Sistema de Fijación: Palanca



Código	Inserto	ØD	E	Ød	ØD
APO AR 10 PN	RCMT 10	8.80	3.18	5.40	6.70
APO AR 12 PN	RCMT 12	10.50	3.18	5.40	6.70

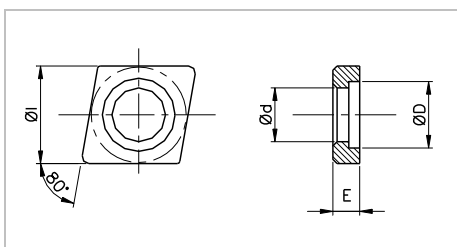
Sistema de Fijación: Perno Central y Brida / Tornillo

### Tipo C



Código	Inserto	Øl	E	Ød
APO AC 12 M	CNMG 12	11.6	3.18	6.40
APO AC 15 M	CNMG 15	14.6	4.76	8.20
APO AC 19 M	CNMG 19	18.0	4.76	9.70

Sistema de Fijación: Palanca



Código	Inserto	Øl	E	Ød	ØD
APO AC 12 K	CNMG 12	12.50	4.76	7.50	8.20
APO AC 12 PN	CNMG 12	12.50	4.76	5.00	6.90
APO AC 19 PN	CNMG 19	18.80	4.76	11.3	13.00
APO AC 19 K	CNMG 19	18.70	4.76	11.3	12.30

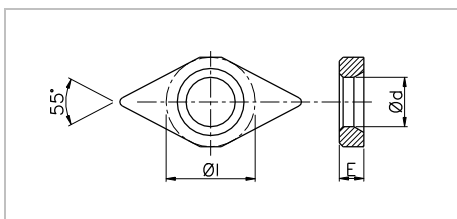
Sistema de Fijación: Perno Central y Brida / Tornillo

## Placas de Apoio

(de acordo a standard Argensinter)

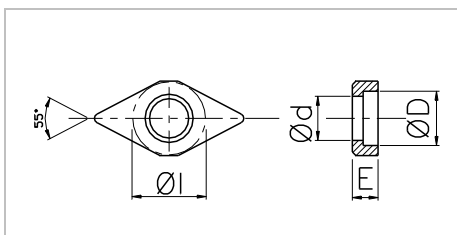
Pág. 5 de 6

### Tipo D



Código	Inserto	Øl	E	Ød
APO AD 15 M	DNMG 15	11.6	3.18	6.4

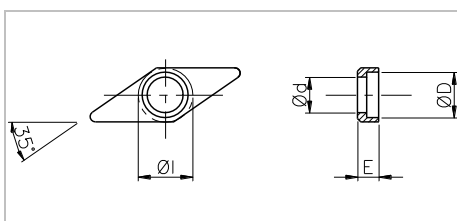
Sistema de Fijación: Palanca



Código	Inserto	Øl	E	Ød	ØD
APO AD 11 PN	DCMT 11	8.50	3.18	5.40	6.70
APO AD 11 T	DCMT 11	8.50	3.18	6.80	7.20
APO AD 15 K	DNMG 15	12.45	4.76	7.50	8.20
APO AD 15 KG	DNMG 15	12.45	8.00	7.50	8.20
APO AD 15 I	DNMG 15	12.45	3.18	7.50	8.20

Sistema de Fijación: Perno Central y Brida / Tornillo

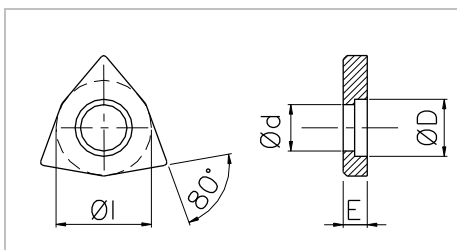
### Tipo V



Código	Inserto	Øl	E	Ød	ØD
APO AV 16 PN	VBMT 16	8.25	3.18	5.40	6.90
APO AV 16 K	VNMG 16	9.14	3.18	5.90	6.60

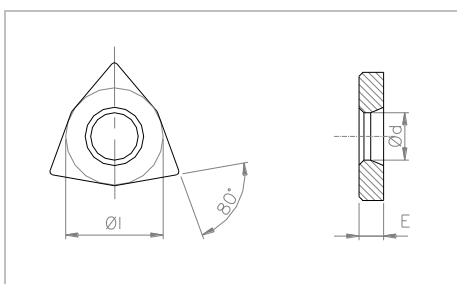
Sistema de Fijación: Perno Central y Brida / Tornillo

### Tipo W



Código	Inserto	Øl	E	Ød	ØD
APO AW 0603	WNMG 06	8.90	3.18	5.00	6.00
APO AW 0803	WNMG 08	12.80	3.18	6.10	7.50

Sistema de Fijación: Perno Central y Brida / Tornillo



Código	Inserto	Øl	E	Ød
APO AW 0803 M	WNMG 08	12.80	3.18	6.50

Sistema de Fijación: Palanca

Por favor, para información adicional contate-nos ou visite-o nosso website [www.argensinter.com](http://www.argensinter.com)

Argensinter S.R.L. – Metal Duro y Ferramentas Especiais  
Tacuarí 925 (B1704FJM) Ramos Mejía  
Provincia de Buenos Aires, Argentina  
Fone: (+54) 11 4658 7637 – Fax: (+54) 11 4656 8028  
email: vendas@argensinter.com - Web site: <http://www.argensinter.com>