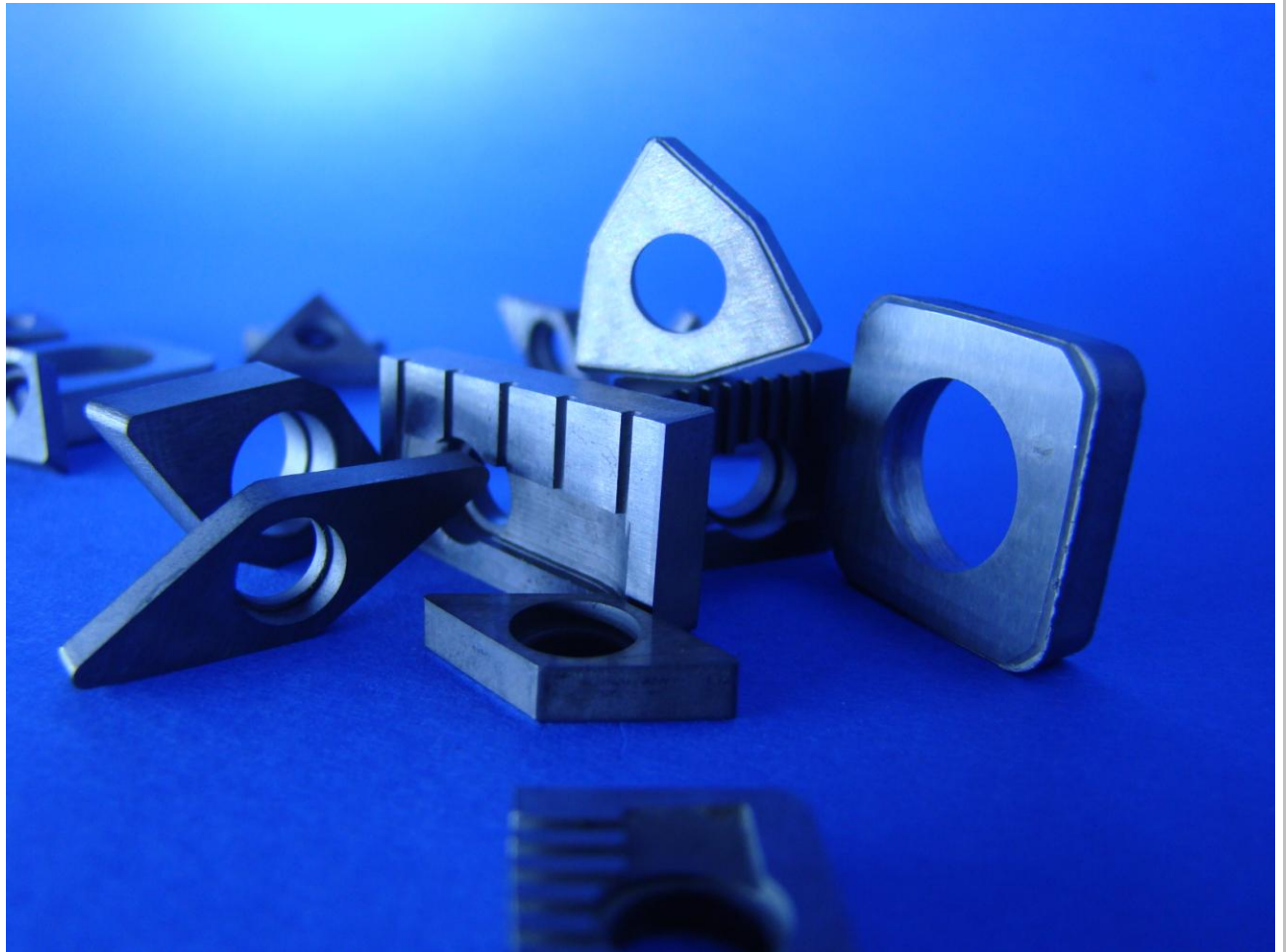


# Shims

Argensinter standard

---



## Shims

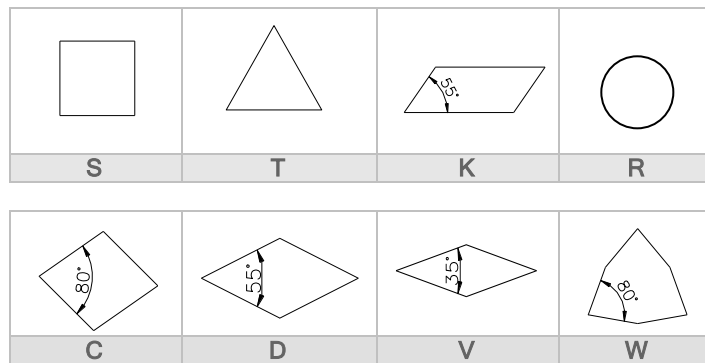
(according to Argensinter Standard)

ISO Code - Interchangeable Tips

Code Structure:

<b>A</b>	<b>S</b>	<b>12</b>	<b>M</b>
1	2	3	4

1 Family Code. "A" = Shims  
2 Tip Shape or Tip Geometry



3 Recruit Circle of the interchangeable tip  
4 Fixation System

M = Handle (Palanca)  
PN = Central bolt and Bridle (Perno Central y Brida)  
E = Thorn (Espina Partida)  
K = Central bolt and Bridle (Perno Central y Brida)

**New!**



Save time and get the best service. Visit [MiArgensinter!](http://mi.argensinter.com.ar) (<http://mi.argensinter.com.ar>) and enter our online commercial platform. Consult our prices and the stock of these and/or any of our other products.

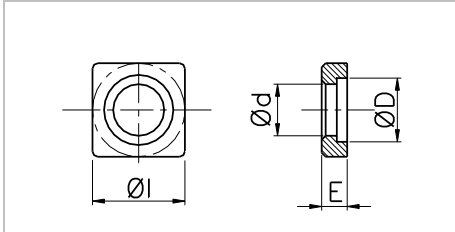
You will also be able to buy and order the manufacturing of more items without moving from your desk in a fast and safe way.

If you are in Argentina, you will receive your order in 24 hours (depending of your location, the period may be longer).

## Shims

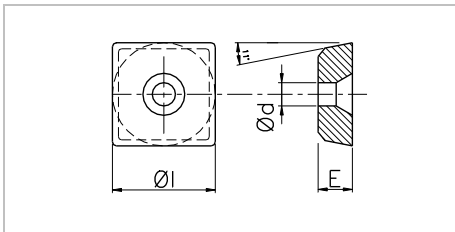
(according to Argensinter Standard)

### Type S



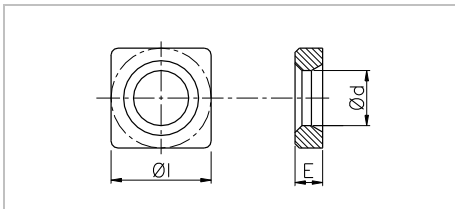
Code	Insert	Øl	E	Ød	ØD
APO AS 12 PN	SNMG 12	12.50	4.76	5.00	6.90
APO AS 12 PNG	SNMG 12	12.50	3.18	6.60	8.20
APO AS 12 K	SNMG 12	12.50	4.76	7.50	8.20
APO AS 19 K	SNMG 19	18.70	4.76	11.30	12.3
APO AS 19 PN	SNMG 19	18.70	4.76	11.30	13.0

Fixation System: Central bolt and Bridle (Perno Central y Brida)



Code	Insert	Øl	E	Ød
APO AS 12 EP	SPUN 12	11.3	3.18	3.40
APO AS 19 EP	SPUN 19	18.0	4.76	3.40

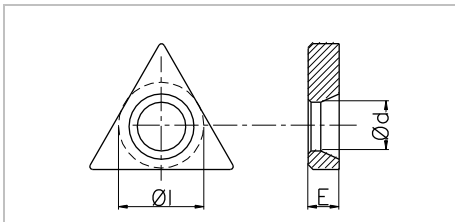
Fixation System: Thorn (Espina Partida)



Code	Insert	Øl	E	Ød
APO AS 12 M	SNMG 12	11.6	3.18	6.40
APO AS 15 M	SNMG 15	14.6	4.76	8.20
APO AS 19 M	SNMG 19	18.0	4.76	9.70
APO AS 25 M	SNMG 25	24.10	6.35	12.9

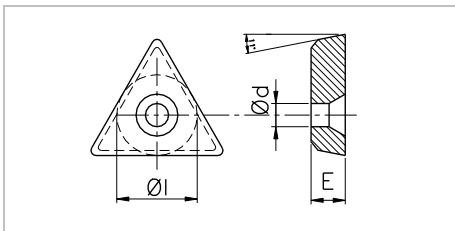
Fixation System: Handle (Palanca)

### Type T



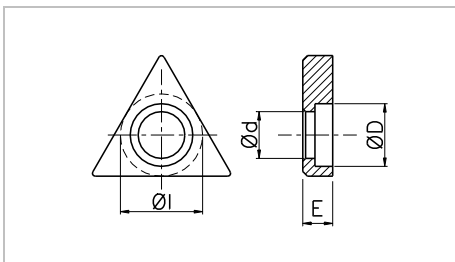
Code	Insert	Øl	E	Ød
APO AT 16 M	TNMG 16	8.8	3.18	4.90
APO AT 22 M	TNMG 22	11.8	3.18	6.40
APO AT 27 M	TNMG 27	14.60	4.76	8.20
APO AT 33 M	TNMG 33	17.80	4.76	9.80

Fixation System: Handle (Palanca)



Code	Insert	Øl	E	Ød
APO AT 16 EP	TPUN 16	8.00	3.18	2.40
APO AT 22 EP	TPUN 22	11.00	3.18	3.40
APO AT 27 EP	TPUN 27	13.30	4.76	3.40

Fixation System: Thorn (Espina Partida)



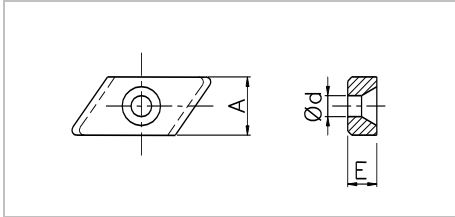
Code	Insert	Øl	E	Ød	ØD
APO AT 16 PN	TNMG 16	8.80	3.18	5.10	6.10
APO AT 16 K	TNMG 16	8.80	4.76	6.20	6.00
APO AT 22 PN	TNMG 22	11.70	4.76	5.10	6.50
APO AT 22 PNG	TNMG 22	11.70	4.76	6.20	7.50
APO AT 22 K	TNMG 22	11.70	4.76	7.20	8.00

Fixation System: Central bolt and Bridle (Perno Central y Brida)

## Shims

(according to Argensinter Standard)

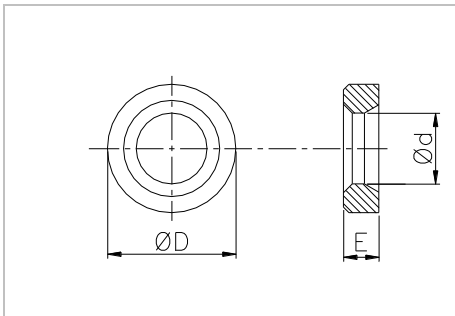
### Type K



Code	Insert	Øl	E	Ød
APO AK 16 ER	KNUX 16 (R)	9.40	4.76	3.40
APO AK 16 EL	KNUX 16 (L)	9.40	4.76	3.40

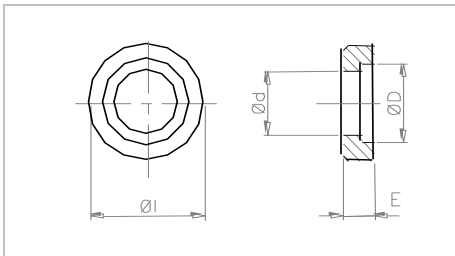
Fixation System: Thorn (Espina Partida)

### Type R



Code	Insert	ØD	E	Ød
APO AR 20 M	RCMT 20	17.50	4.76	8.20
APO AR 25 M	RCMT 25	22.00	6.35	9.80

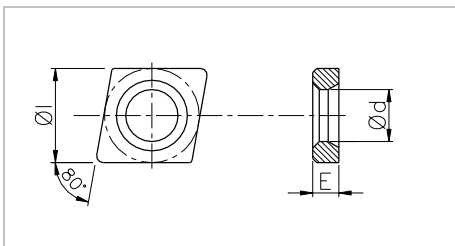
Fixation System: Handle (Palanca)



Code	Insert	ØD	E	Ød	Øl
APO AR 10 PN	RCMT 10	8.80	3.18	5.40	6.70
APO AR 12 PN	RCMT 12	10.50	3.18	5.40	6.70

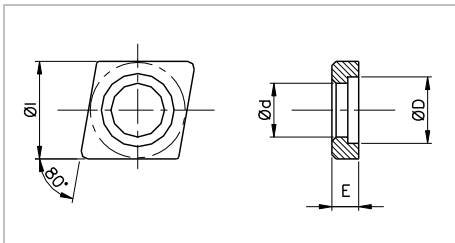
Fixation System: Central bolt and Bridle (Perno Central y Brida)

### Type C



Code	Insert	Øl	E	Ød
APO AC 12 M	CNMG 12	11.6	3.18	6.40
APO AC 15 M	CNMG 15	14.6	4.76	8.20
APO AC 19 M	CNMG 19	18.0	4.76	9.70

Fixation System: Handle (Palanca)



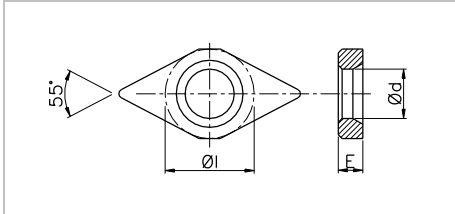
Code	Insert	Øl	E	Ød	ØD
APO AC 12 K	CNMG 12	12.50	4.76	7.50	8.20
APO AC 12 PN	CNMG 12	12.50	4.76	5.0	6.90
APO AC 19 PN	CNMG 19	18.80	4.76	11.3	13.00
APO AC 19 K	CNMG 19	18.70	4.76	11.3	12.30

Fixation System: Central bolt and Bridle (Perno Central y Brida)

## Shims

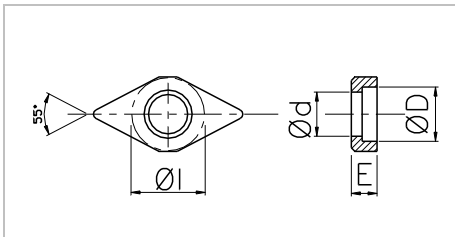
(according to Argensinter Standard)

### Type D



Code	Insert	ØI	E	Ød
APO AD 15 M	DNMG 15	11.6	3.18	6.4

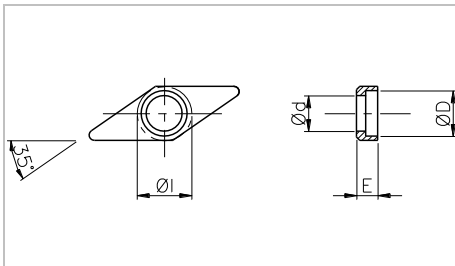
Fixation System: Handle (Palanca)



Code	Insert	ØI	E	Ød	ØD
APO AD 11 PN	DCMT 11	8.50	3.18	5.40	6.70
APO AD 11 T	DCMT 11	8.50	3.18	6.80	7.20
APO AD 15 K	DNMG 15	12.45	4.76	7.50	8.20
APO AD 15 KG	DNMG 15	12.45	8.00	7.50	8.20
APO AD 15 I	DNMG 15	12.45	3.18	7.50	8.20

Fixation System: Central bolt and Bridle (Perno Central y Brida)

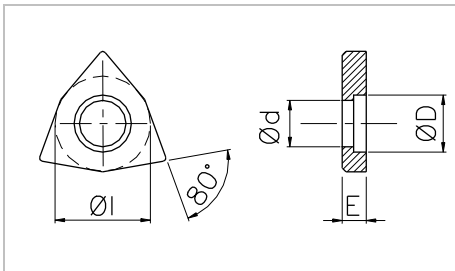
### Type V



Code	Insert	ØI	E	Ød	ØD
APO AV 16 PN	VBMT 16	8.25	3.18	5.40	6.90
APO AV 16 K	VNMG 16	9.14	3.18	5.90	6.60

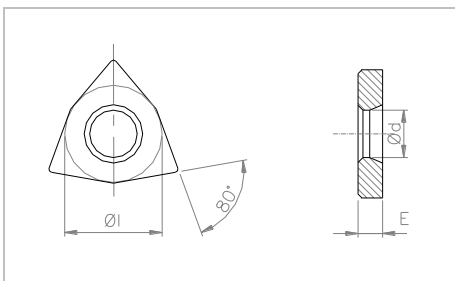
Fixation System: Central bolt and Bridle (Perno Central y Brida)

### Type W



Code	Insert	ØI	E	Ød	ØD
APO AW 0603	WNMG 06	8.90	3.18	5.00	6.00
APO AW 0803	WNMG 08	12.80	3.18	6.10	7.50

Fixation System: Central bolt and Bridle (Perno Central y Brida)



Code	Insert	ØI	E	Ød
APO AW 0803 M	WNMG 08	12.80	3.18	6.50

Fixation System: Handle (Palanca)

ARGENSINTER

Argensinter S.R.L. – Hard Metal and Special Cutting Tools  
Tacuarí 925 (B1704FJM) Ramos Mejía  
Province of Buenos Aires, Argentina  
Phone: (+54) 11 4658 7637 – Fax: (+54) 11 4656 8028  
email: sales@argensinter.com - Web site: <http://www.argensinter.com>