

Saw Tips

Argensinter standard

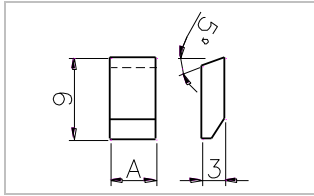


Saw Tips

(according to Argensinter Standard)

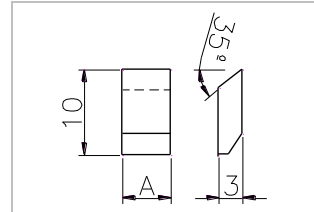
Page 2 of 5

Type: SA



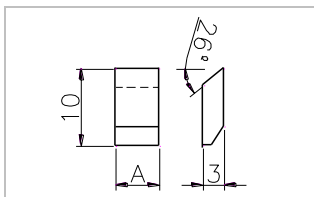
Code	A
PSI SA3	3
PSI SA35	3.5
PSI SA4	4
PSI SA45	4.5
PSI SA5	5

Type: SB



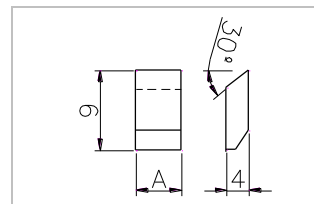
Code	A
PSI SB3	3
PSI SB35	3.5
PSI SB4	4
PSI SB45	4.5
PSI SB5	5

Type: SC



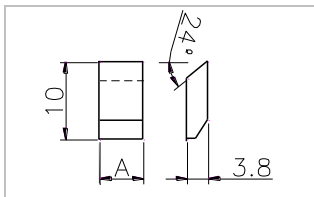
Code	A
PSI SC3	3
PSI SC35	3.5
PSI SC4	4
PSI SC45	4.5
PSI SC5	5

Type: SD



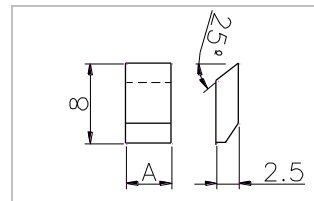
Code	A
PSI SD3	3
PSI SD35	3.5
PSI SD4	4
PSI SD45	4.5
PSI SD5	5

Type: SE



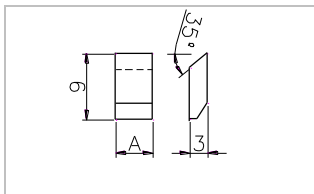
Code	A
PSI SE3	3
PSI SE35	3.5
PSI SE4	4
PSI SE45	4.5
PSI SE5	5

Type: SF



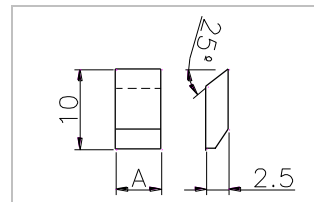
Code	A
PSI SF3	3
PSI SF35	3.5
PSI SF4	4
PSI SF45	4.5
PSI SF5	5

Type: SG



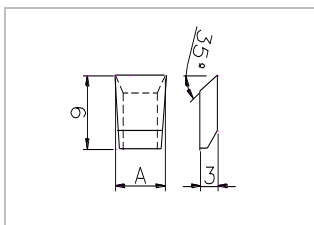
Code	A
PSI SG3	3
PSI SG35	3.5
PSI SG4	4
PSI SG45	4.5
PSI SG5	5

Type: SH



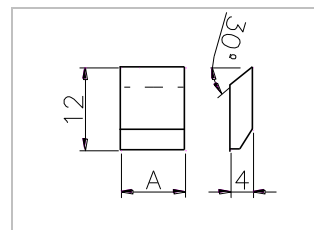
Code	A
PSI SH3	3
PSI SH35	3.5
PSI SH4	4
PSI SH45	4.5
PSI SH5	5

Type: SJ



Code	A
PSI SJ3	3
PSI SJ35	3.5
PSI SJ4	4
PSI SJ45	4.5
PSI SJ5	5

Type: SK

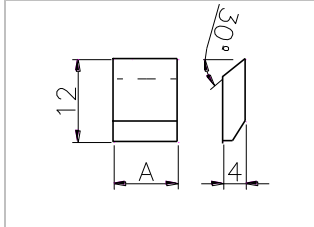


Code	A
PSI SK4	4
PSI SK4.5	4.5
PSI SK5	5
PSI SK5.5	5.5
PSI SK6	6
PSI SK6.5	6.5
PSI SK7	7
PSI SK7.5	7.5
PSI SK8	8
PSI SK8.5	8.5
PSI SK9	9
PSI SK9.5	9.5
PSI SK10	10

Saw Tips

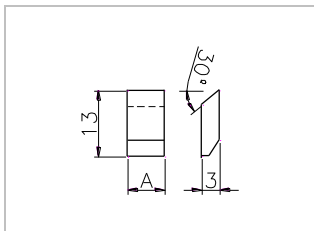
(according to Argensinter Standard)

Type: SK (continuation)



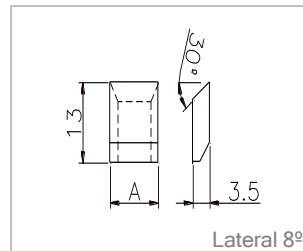
Code	A	Code	A	Code	A	Code	A
PSI SK10.5	10.5	PSI SK20.5	20.5	PSI SK30.5	30.5	PSI SK41	41
PSI SK11	11	PSI SK21	21	PSI SK31	31	PSI SK42	42
PSI SK11.5	11.5	PSI SK21.5	21.5	PSI SK31.5	31.5	PSI SK43	43
PSI SK12	12	PSI SK22	22	PSI SK32	32	PSI SK44	44
PSI SK12.5	12.5	PSI SK22.5	22.5	PSI SK32.5	32.5	PSI SK45	45
PSI SK13	13	PSI SK23	23	PSI SK33	33	PSI SK46	46
PSI SK13.5	13.5	PSI SK23.5	23.5	PSI SK33.5	33.5	PSI SK47	47
PSI SK14	14	PSI SK24	24	PSI SK34	34	PSI SK48	48
PSI SK14.5	14.5	PSI SK24.5	24.5	PSI SK34.5	34.5	PSI SK49	49
PSI SK15	15	PSI SK25	25	PSI SK35	35	PSI SK50	50
PSI SK15.5	15.5	PSI SK25.5	25.5	PSI SK35.5	35.5	PSI SK51	51
PSI SK16	16	PSI SK26	26	PSI SK36	36	PSI SK52	52
PSI SK16.5	16.5	PSI SK26.5	26.5	PSI SK36.5	36.5	PSI SK53	53
PSI SK17	17	PSI SK27	27	PSI SK37	37	PSI SK54	54
PSI SK17.5	17.5	PSI SK27.5	27.5	PSI SK37.5	37.5	PSI SK55	55
PSI SK18	18	PSI SK28	28	PSI SK38	38	PSI SK56	56
PSI SK18.5	18.5	PSI SK28.5	28.5	PSI SK38.5	38.5	PSI SK57	57
PSI SK19	19	PSI SK29	29	PSI SK39	39	PSI SK58	58
PSI SK19.5	19.5	PSI SK29.5	29.5	PSI SK39.5	39.5	PSI SK59	59
PSI SK20	20	PSI SK30	30	PSI SK40	40	PSI SK60	60

Type: SL



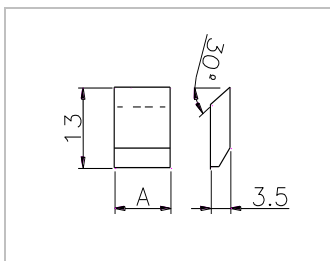
Code	A
PSI SL3	3
PSI SL35	3.5
PSI SL4	4
PSI SL45	4.5
PSI SL5	5

Type: SM



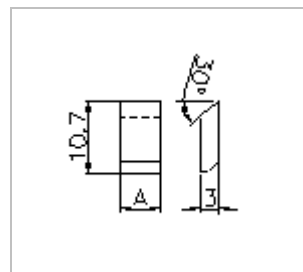
Code	A
PSI SM4	4
PSI SM5	5
PSI SM6	6
PSI SM7	7
PSI SM8	8
PSI SM9	9
PSI SM10	10
PSI SM12	12
PSI SM15	15
PSI SM18	18
PSI SM20	20
PSI SM22	22
PSI SM25	25

Type: SN



Code	A
PSI SN4	4
PSI SN5	5
PSI SN6	6
PSI SN7	7
PSI SN8	8
PSI SN9	9
PSI SN10	10
PSI SN12	12
PSI SN15	15
PSI SN18	18
PSI SN20	20
PSI SN22	22
PSI SN25	25

Type: SO

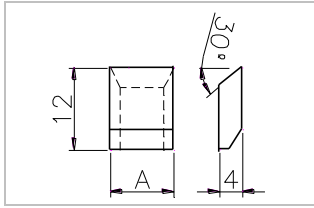


Code	A
PSI SO3	3
PSI SO35	3.5
PSI SO4	4
PSI SO45	4.5
PSI SO5	5

Saw Tips

(according to Argensinter Standard)

Type: SP



Code	A
PSI SP4	4
PSI SP5	5
PSI SP6	6
PSI SP7	7
PSI SP8	8
PSI SP9	9
PSI SP10	10
PSI SP12	12
PSI SP15	15
PSI SP18	18
PSI SP20	20
PSI SP22	22
PSI SP25	25

New!



Save time and get the best service. Visit ***MiArgensinter!***

(<http://mi.argensinter.com.ar>) and enter our online commercial platform. Consult our prices and the stock of these and/or any of our other products.

You will also be able to buy and order the manufacturing of more items without moving from your desk in a fast and safe way.

If you are in Argentina, you will receive your order in 24 hours (depending of your location, the period may be longer).

For further information, please do not hesitate to contact us or visit our web site at www.argensinter.com

ARGENSINTER

Argensinter S.R.L. – Hard Metal and Special Cutting Tools
Tacuarí 925 (B1704FJM) Ramos Mejía
Province of Buenos Aires, Argentina
Phone: (+54) 11 4658 7637 – Fax: (+54) 11 4656 8028
email: sales@argensinter.com - Web site: <http://www.argensinter.com>